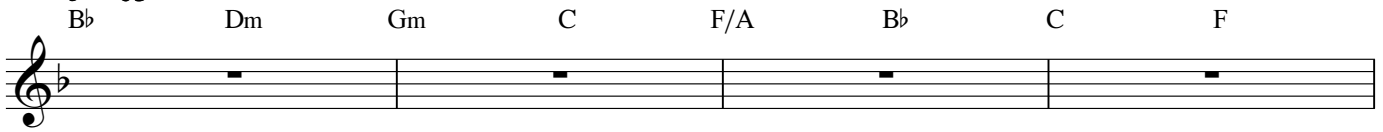


So we trust in the Lord

To the tune of Loch Lomond

Andante

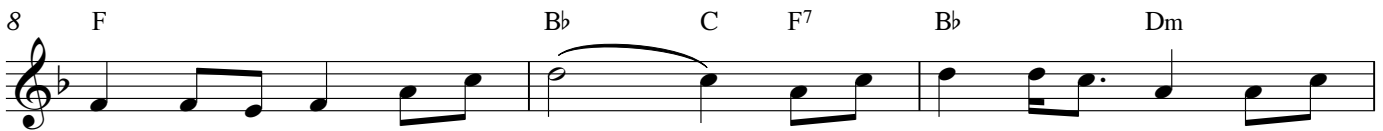
$\text{♩} = 65$
B \flat



Chorus



So we trust in the Lord, and we give him our hearts Lean - ing

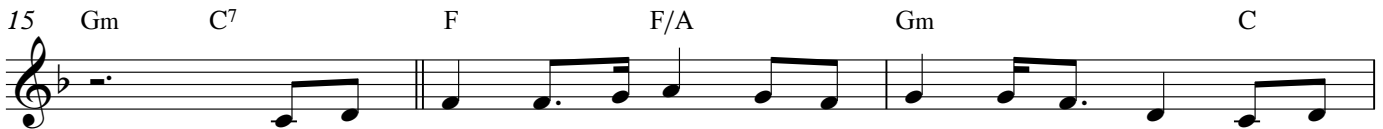


not on our own un - der stan - ding, And for all of our days, we'll sub -



mit our plans to God, so then he will sure - ly make all our paths straight.

Verse



1. We will be like a tree plan - ted by run - ning streams, For whose



roots spread through - out deep - est wa - ters. So we won't be a - fraid when a



year of drought des - cends, For we'll bear plen - ty fruit in each sea - son.

So we trust in the Lord

Chorus

*So we trust in the Lord, and we give him our hearts,
Leaning not on our understanding.
And for all of our days, we'll submit our plans to God
so then he will surely make all our paths straight.*

1. We will be like a tree planted by running streams,
For whose roots spread throughout deepest waters,
So we won't be afraid when a year of drought descends,
For we'll bear plenty fruit in each season.
2. We commit to the Lord, all the goals of our lives,
So that all of our plans he'll establish.
If we ask anything that's consistent with his will,
Then he'll do it to glorify Jesus.
3. Let us earnestly seek first the kingdom of God,
And the just righteousness of our Father,
For then all of these things will be added unto you,
from our Father who knows all our longings.

This song to the tune of Loch Lomond uses the words of
Proverbs 3, Matthew 6:33, Jeremiah 17:8, and 1 John 5:14.